



## Factsheet – Snapshot: Latrobe Valley coal mines



**Hazelwood**  
*ENGIE*



**Yallourn**  
*EnergyAustralia*



**Loy Yang**  
*AGL*

<b>Commenced operation*</b>	1964	1924	1984
<b>Mining lease(s)</b>	MIN5004	MIN5003, MIN5216, MIN5304	MIN5189
<b>Mining lease area</b>	3,320Ha	5,595Ha	4,560Ha
<b>Mine area (final)</b>	1,176Ha	2,040Ha (2,300Ha)	930Ha (2,200Ha)
<b>Mine depth (approx.)</b>	Max 130m	Max 95m	Max 200m
<b>Disturbed land area</b>	2,500Ha	2,800Ha	1,900Ha
<b>Groundwater extraction licence per year</b>	22GI	3GI	20GI
<b>Total coal produced to date (approx.)</b>	770 million tonnes extracted	1,100 million tonnes extracted	800 million tonnes extracted
<b>Planned date for cessation of mining</b>	2017	2032	2048

\*Source:

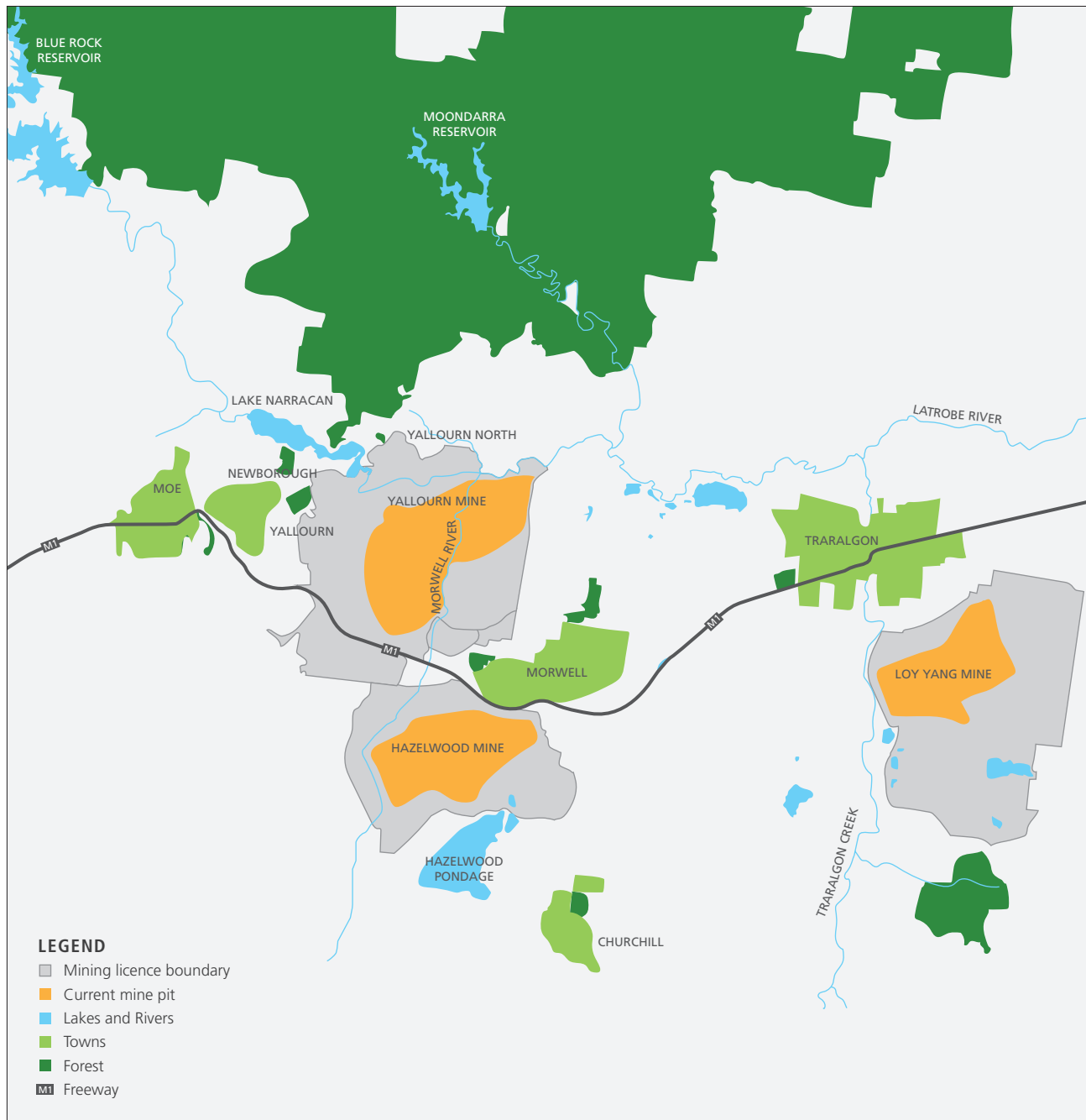
<http://report.hazelwoodinquiry.vic.gov.au/part-one-introduction-inquiry/background.html>  
<http://www.powerworks.net.au/history-of-coal/>

### Quick facts

- Coal is very light – it is about 10 per cent heavier than water.
- Water content of coal is about 65 per cent, which means that it has a low thermal energy value for power generation.
- The ratio of overburden to coal at the mines varies but is typically 1:4 and coal seams are typically 60m to 100m thick. This makes the coal cheap to mine but means that there is very little material to backfill the mine for rehabilitation.
- Groundwater pumping from the Morwell and Traralgon aquifers that underlie the mines is required to prevent floor heave.
- Horizontal drains are installed in the coal batters to prevent batter instability.
- Progressive rehabilitation has been undertaken, per regulatory requirements, during mining operations on much of the external overburden dumps and on selected batters and internal dumps.

## Map of the Latrobe Valley

Source: Hazelwood Mine Fire Inquiry 2015-16 Volume IV – Mine Rehabilitation



## More information

[www.lvmrc.vic.gov.au](http://www.lvmrc.vic.gov.au) | [commissioner@lvmrc.vic.gov.au](mailto:commissioner@lvmrc.vic.gov.au) | 1800 571 966 | [www.facebook.com/lvminerehab](https://www.facebook.com/lvminerehab)



The office of the Latrobe Valley Mine Rehabilitation Commissioner was established in response to a recommendation by the 2015-16 Hazelwood Mine Fire Inquiry. Professor Rae Mackay was appointed in June 2017. The Commissioner provides independent advice directly to the Victorian government on mine rehabilitation, and works closely with the community, stakeholders and the three mine owners (ENGIE, EnergyAustralia and AGL) on mine rehabilitation planning.